

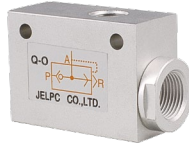
CE
ISO9001:2008

QE, QEA Series

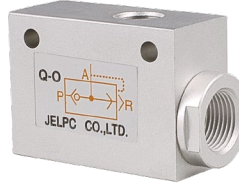
Quick Exhaust Valve



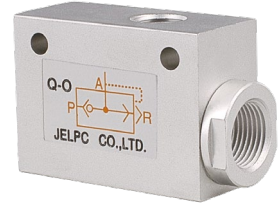
QE-01



QE-01



QE-02



QE-03

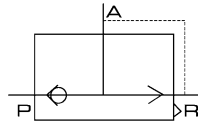
Valve

DJF
JELMP
JELP/G
MCS
4V100
4V200
4V300
4V400
Manifold
SV
3V1
JEL
3VJZF
4VJZF
MVSD
VF, VZ
BM
Diaphragm
Coil
2V
2W
2W(Big)
2P
2L
VX
PU
PU225
2Q
JEL5404
JEL6213
BU
Pulse
JELJZF
4H
TSV
MPV
4HV
HV, K
4R
FV
MSV
JM
ASC, RE
QE, QEA
ST
HSV

Ordering Code

QE	01
Series Code	Port Size
QE: Quick Exhaust Valve	01: G 1/8"
QEA: Quick Exhaust Valve	02: G 1/4"
	03: G 3/8"
	04: G 1/2"
	06: G 3/4"

Symbol

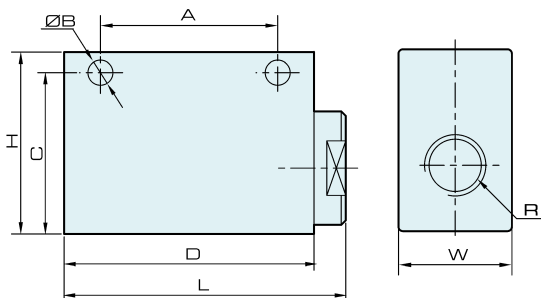


Specification

Model	QE-01	QE-02	QE-03	QE-04	QE-06
Port Size	G 1/8"	G 1/4"	G 3/8"	G 1/2"	G 3/4"
Effective Cross Section Area	16 mm ²	27.5 mm ²	28 mm ²	71 mm ²	72.5 mm ²
Working Medium	Air				
Working Pressure	0 ~ 1.0 MPa				
Ambient Temperature	0 ~ 60 °C				

Overall Dimension

QE Series



Dimension

Model/Symbol	R	Bore	L	W	H	A	B	C	D
QE-01	G1/8	G1/8	46	20	32	30	4.3	27	40
QE-02	G3/8	G1/4	62	25	40	39	5.6	33.5	55
QE-03	G3/8	G3/8	62	25	40	39	5.6	33.5	55
QE-04	G1/2	G1/2	98	38	64	60	8.5	51	90
QE-06	G3/4	G3/4	98	38	64	60	8.5	51	90